

STANDARD
EQUIPMENT



Curved Bar Screen



Krüger offers a standard range of curved bar screens model DN easily installed in new or existing channels of a straight rectangular form.

Standard finish of curved bar screen: Hot dip galvanized steel. Standard finish of rake and scraper: Stainless steel.

High reliability because the construction is based on a few, sturdy and fully tested components.

ADVANTEGES

- ▶ Curved bars provide maximum screening area
- ▶ Hydraulic operation and fully automatic control
- ▶ Efficient cleaning by variable operation timing

Curved Bar Screen

Operating Cycle of the Curved Bar Screen

The screen system is normally set to operate according to the average quantity of screenings in the flow. A 0-60 minute timer controls the operating frequency. Another 0-3 minute timer controls the screen operating time. At high waster level a special level electrode superposes the normal operating cycle. The screen operates through a 90° circular action. The horizontal and vertical positions are controlled by proximity switches.

At rest, the rake arm is withdrawn from the bars in top horizontal position.

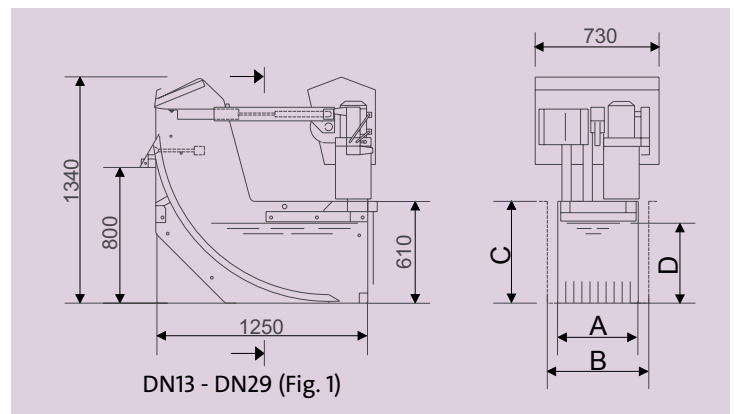
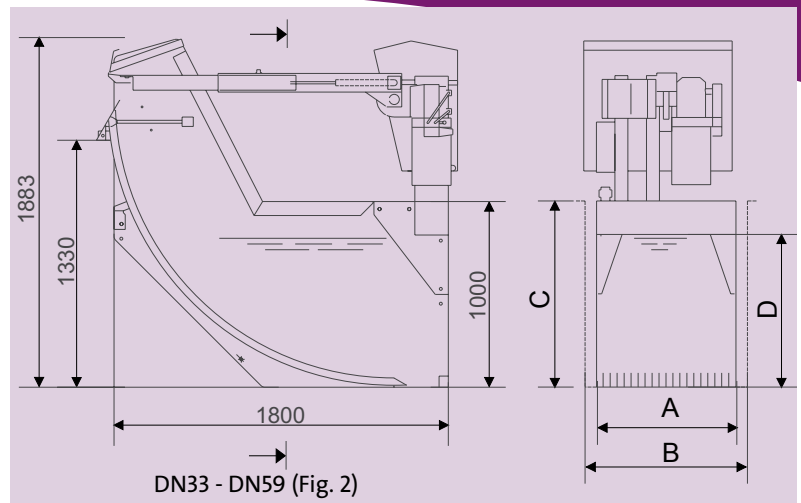
When operation begins, pressure is released in the rotary actuator. The arm falls slowly to the vertical position and the hydraulic cylinder moves the rake arm downwards to engage with the bars.

When the rake is fully engaged, the rotary actuator will cause the arm to move upward, and the rake returns to its horizontal position. The screenings are removed by a pivoting scraper mechanism, as the hydraulic cylinder makes the rake withdraw, and are discharged onto a slide plate and into a conveyor or container.

No damage to the bar screen when obstructed by trapped material

When obstructed by trapped debris and prevented from full engagement with the bars, the rake arm is stopped automatically.

An increase in pressure in the hydraulic actuator circuits causes the hydraulic cylinder to withdraw.



Then the actuator starts again controlled by an adjustable delay timer. The rake moves for 2-4 seconds along the upward radial path, which gives the rake arm just enough time to move over small obstructions. The rake then re-engages, and normal operation continues.

Curved B Screen model DN	13	16	19	23	26	29	33	36	39	43	46	49	53	56	59
Screen bar spacing mm	10	16	22	10	16	22	10	16	22	10	16	22	10	16	22
Kap. l/s	110	140	150	150	180	200	280	340	400	300	380	450	350	430	500
A		475			612			785			932			1050	
B		550			700			850			1000			1100	
C		750			750			1100			1250			1250	
D		480			480			800			800			800	
Screen bar width mm		6			6			8			8			8	

Kruger A/S reserves the right to change technical specifications without prior notice.

KRÜGER

Kruger A/S

Gldsaxevej 363
DK-2860 Søborg
Tlf: +45 39 69 02 22

E-mail: kruger@kruger.dk | www.kruger.dk

Klamsagervej 2-4
DK-8230 Åbyhøj
Tlf: +45 87 46 33 00

Indkildevej 6 C
DK-9210 Aalborg SØ
Tlf: +45 98 18 93 00

Baldersbækvej 7
DK-2635 Ishøj
Tlf: +45 43 30 01 11