

STANDARD
EQUIPMENT



Rotary Drum Thickener

Treats all types of sludge



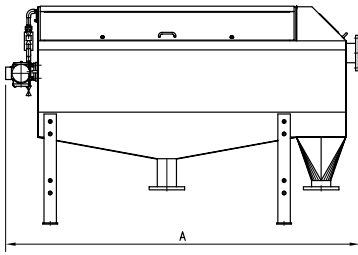
Superior technology

The rotary drum thickener is a high-technology quality product developed in order to thicken industrial or municipal wastewater sludge which is very difficult to dewater.

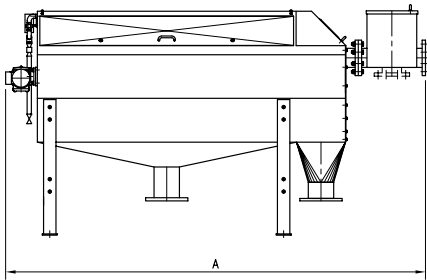
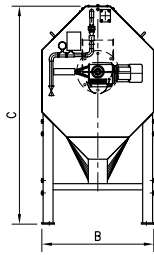
A variety of applications

- ▶ For concentration of sludge before digesters: Bio-P sludge is thickened without release of phosphorus, and the biological sludge is thickened to a high dry solids content.
- ▶ For replacement of concentration tanks for both primary and biological sludge.
- ▶ For increase of the dry solids capacity at the final dewatering plant: Decanter centrifuge, filter belt presses and frame filter presses.
- ▶ As sole thickener at plants where a high dry solids content is not required.

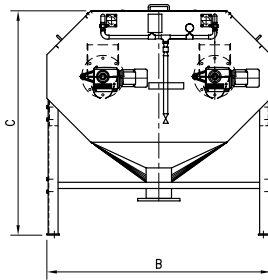
Rotary Drum Thickener



Type DR 30



Type DR 40



Dimensions:	DR30	DR40
A (mm)	2880	3340
B (mm)	900	1800
C (mm)	1750	1800

Function

The sludge concentration is performed in two phases:

CONDITIONING: An organic polyelectrolyte (polymer) is added which flocculates the sludge and increases the dewaterability of the sludge.

CONCENTRATION: The sludge is introduced at the bottom of the rotary drum thickener through a patented system which ensures that the introduced wash water does not run into the partly dewatered sludge.

Owing to the windings and the rotation of the drum, the sludge is continuously turned around so that the free water passes the filter cloth and gravitates to the outlet.

The speed and direction of rotation of the drum can be adjusted as required.

Upon the completion of an operating period the drum is automatically emptied of sludge and cleaned.

Working environment

The rotary drum thickener complies with the Danish Working Environment Authority's rules on jobsite safety cf. regulation no. 9 of 14.01.1988 (Regulation on sewer works etc.)

The rotary drum thickener has been designed in such a way that aerosols and odour do not escape to the room.

Design

Krüger's rotary drum thickeners are all made of first-class materials and of a high quality which ensure a reliable operation and low maintenance costs.

The rotary drum thickener consists of an enclosed cabinet in which a drum is suspended. The drum rotates by means of an adjustable gearmotor. The drum is built of a skeleton onto which windings have been welded. A filter cloth made of polyester has been fastened around the skeleton.

The nozzles for cleaning of the filter cloth are installed on a pipe which – without use of tools – can be taken out for inspection and cleaning. Wash water can be used for cleaning of the drum.

Specifications

Gearmotor:	Frequency-controlled, Nordgear
Rotary drum thickener:	Stainless steel SS2333 (acid-proof steel SS2343)
Extra equipment:	The drum thickener can be equipped with high-pressure washer Sampling of reject water

Technical specifications:

Type	Weight	No. of drums	Motor output	Min. wash water pressure	Wash water consumption at 5 bar	Max. wash water temperatur	Sludge capacity	
	kg	No.	kW	bar	m ³ /hour	°C	m ³ /hour	kgSS/time
DR30	465	1	1 x 0,25	5	2,9	60	10 - 30	50 - 300
DR40	850	2	2 x 0,25	5	5,8	60	20 - 60	100 - 600

The technical specifications are subject to alterations

KRÜGER

Krüger A/S

Gladsaxevej 363
DK-2860 Søborg
Tlf: +45 39 69 02 22

E-mail: kruger@kruger.dk | www.kruger.dk

Klamsagervej 2-4
DK-8230 Åbyhøj
Tlf: +45 87 46 33 00

Indkildevej 6 C
DK-9210 Aalborg SØ
Tlf: +45 98 18 93 00

Baldersbækvej 7
DK-2635 Ishøj
Tlf: +45 43 30 01 11